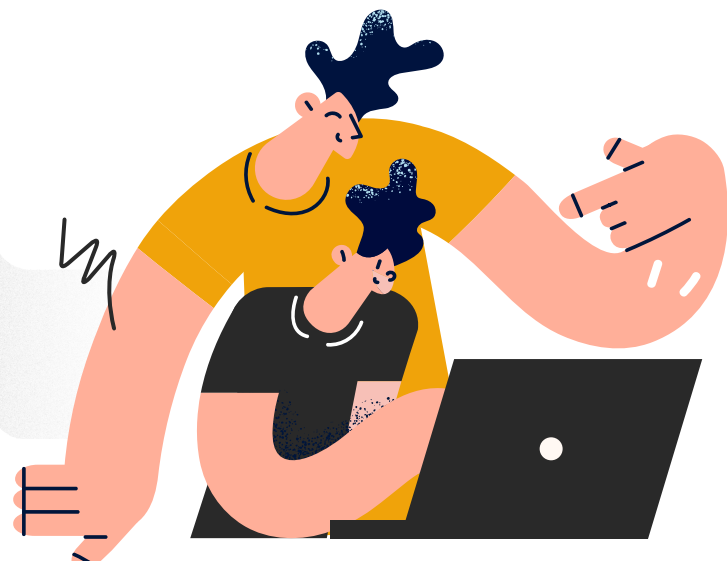


Key Elements to Consider when Creating or **Selecting a Learning Delivery Framework**



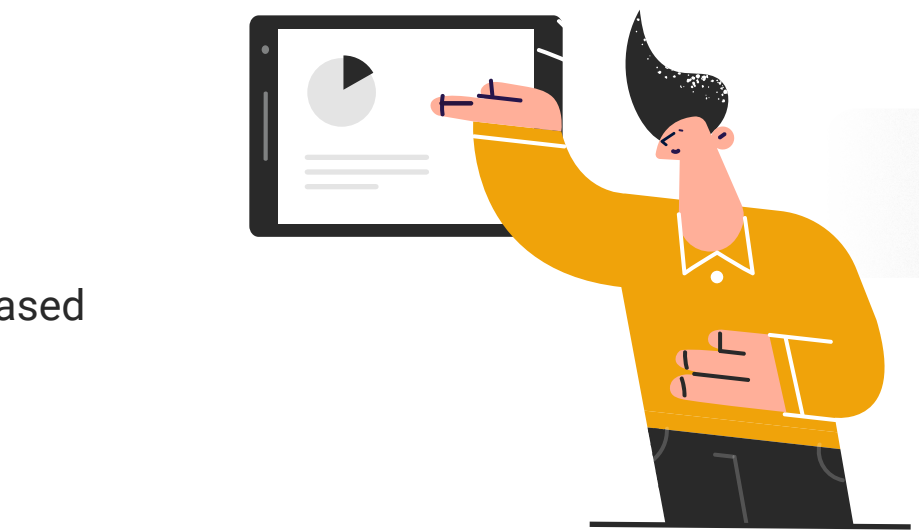
Personalization

- Tailoring content to individual learners' needs and goals.
- Incorporating adaptive learning features, based on learners' progress and performance.
- Providing opportunities for feedback and reflection.



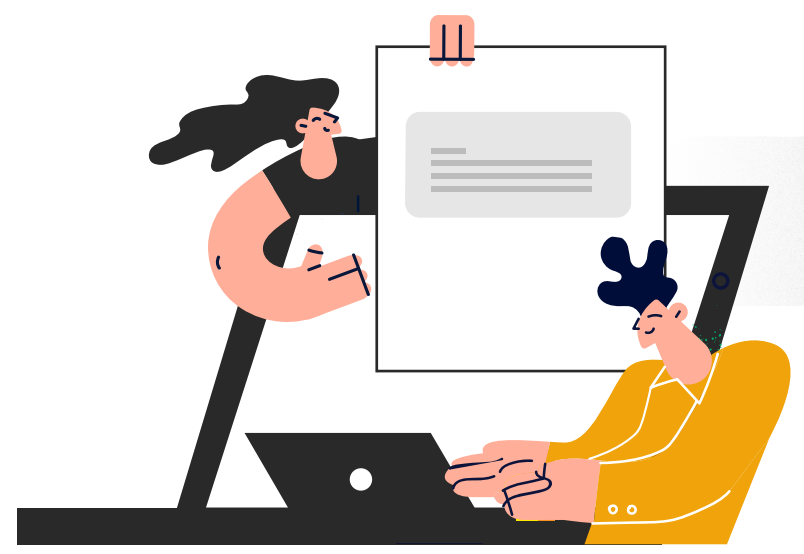
Flexibility

- Accommodating the ability to support various learning styles and preferences.
- Offering options for self-paced learning or structured sessions.
- Ensuring compatibility with different devices and platforms.



Accessibility

- Ensuring compliance with accessibility standards for users with disabilities.
- Supporting multiple languages and diverse cultural backgrounds.
- Providing clear navigation and intuitive interface design.



Engagement

- Including interactive elements such as quizzes, simulations, and gamification.
- Utilizing multimedia content to enhance engagement and retention.
- Implementing collaboration tools for group learning and discussion.

Analytics

- Tracking learner progress and achievement.
- Providing insights into learning patterns and areas for improvement.
- Enabling data-driven decision-making for continuous improvement.

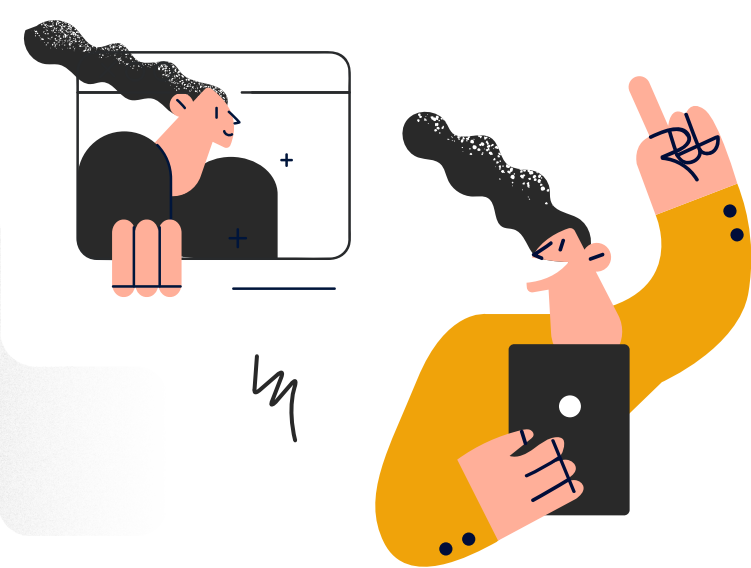
Integration

- Integrating with existing learning management systems (LMS) seamlessly.
- Compatibility with other tools and resources used in the organization.
- Scalability to accommodate future needs and technological advancements.



Support

- Providing access to technical support and assistance for learners.
- Equipping trainers and administrators with resources to manage the framework effectively.
- Offering regular updates and maintenance to ensure optimal performance.



To Learn More About Unlock:Learn "Learning Delivery Framework"

[Contact Us](#)